



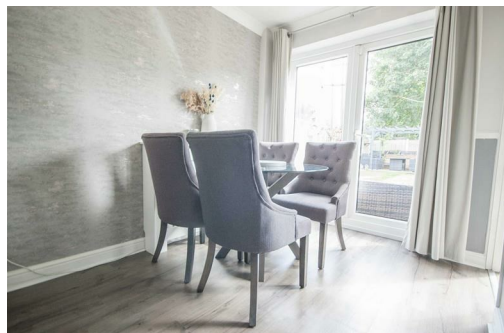
## Daisy Court

Chelmsford, CM1 6QU

**£350,000**



Boasting an UNOVERLOOKED REAR GARDEN is this IMMACULATELY PRESENTED end terraced home offering a GARAGE with 2 parking spaces to the immediate side, THREE GOOD SIZED BEDROOMS, modern fitted kitchen, SPACIOUS 22' LOUNGE DINER and a refitted family bathroom. Call Hamilton Piers of Springfield to view!



# Daisy Court, Chelmsford, CM1 6QU

## Ground Floor:-

### Entrance:

Composite entrance door to front, open to:-

### Lounge Diner:

22'1" > 13'9" x 15'9" (6.73m > 4.19m x 4.80m)

Two double glazed windows to front, double glazed french doors to rear, door to kitchen, stairs to first floor, cupboard under stairs, two radiators, wood effect flooring.

### Kitchen:

7'11" x 7'11" (2.41m x 2.41m)

Double glazed window and door to rear, range of wall and base units, square edge work surfaces with stainless steel sink inset, integrated low level double oven, hob with extractor over, space for fridge freezer, washing machine, part tiled walls, tiled flooring.

## First Floor:-

### Landing:

Doors to bedroom one, bedroom two, bedroom three, family bathroom.

### Bedroom One:

11'11" x 9'3" (3.63m x 2.82m)

Double glazed window to front, loft access, radiator, fitted wardrobes.

### Bedroom Two:

10'1" x 9'4" > 7'9" (3.07m x 2.84m > 2.36m)

Two double glazed windows to rear, radiator.

### Bedroom Three:

6'8" x 6'8" (2.03m x 2.03m)

Double glazed window to front, radiator.

### Family Bathroom:

9'6" x 5'6" (2.90m x 1.68m)

Obscure double glazed window to rear, panel bath with shower over and shower mixer tap, pedestal hand wash basin, low level W/C, chrome towel radiator, part tiled walls, tiled flooring.

## Exterior:-

### Frontage, Parking & Garage:

Garage with up and over door, with parking space to front and side of garage.

### Raer Garden:

Paved patio to immediate rear, gated side access, mature shrubs to border, rest laid to lawn.



At Hamilton Piers we aim to ensure our particulars are accurate and reliable. However, they do not constitute any offer or contract, nor are they to be taken as statements or representations of fact. No tests have been carried out by us in respect of services, systems or appliances contained in the specification and no guarantee as to their operating ability or efficiency is given (unless stated otherwise).

All measurements are a guide only and, therefore, can be approximated in some cases. If purchasing, fixtures and fittings, apart from those mentioned in the particulars, are to be agreed with the seller. Some particulars, please note, may also be awaiting the seller's approval. If clarification or further information is required, please contact us.

AWARD WINNING SALES AND LETTINGS ACROSS ESSEX

01376 341 141 | 01245 269 777 | 01621 212 450 | 01371 809 500 | 0207 079 1510



Zoopa.co.uk

rightmove

onTheMarket.com